

A dramatic scene of a volcanic eruption. In the foreground, a large, dark, conical volcano is erupting, with bright orange and red lava flowing from its summit. The sky is filled with several bright, streaking meteors falling from the top left towards the bottom right. A large, glowing, pinkish-purple sphere, possibly a planet or a large moon, is visible in the upper left quadrant of the sky. The background shows a dark, stormy sky with white clouds. The overall atmosphere is one of intense natural power and cosmic activity.

***Origins:
Is It Reasonable To
Believe in God in
This Scientific Age?***

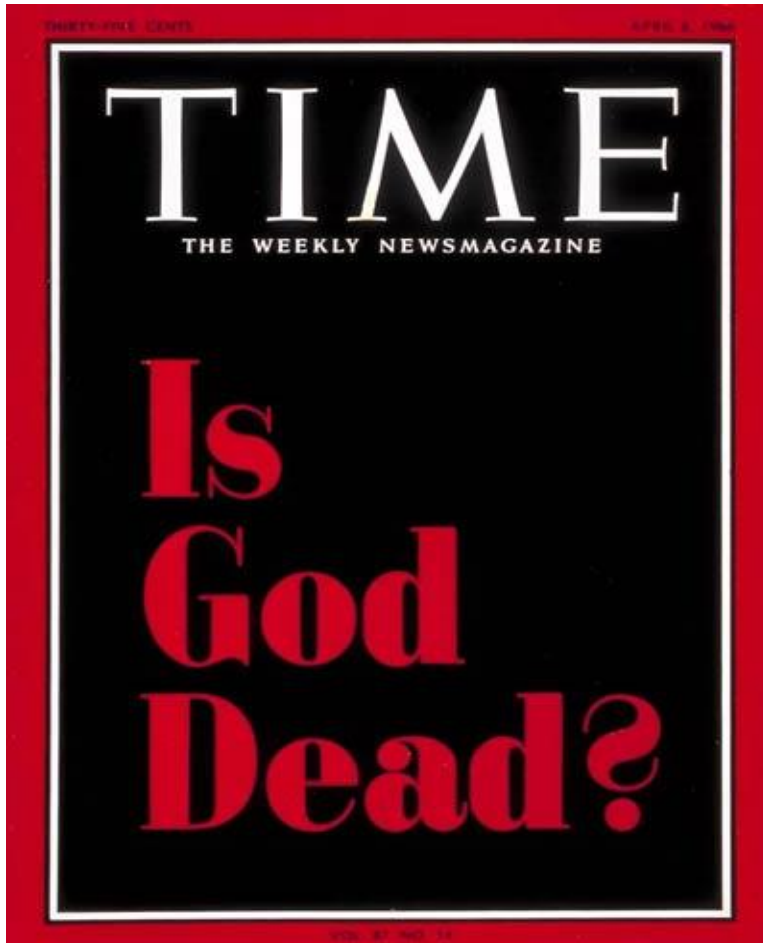
Our God, He Is Alive!

*Is It Reasonable to Believe in this
Scientific Age?*

- **A.W. Dicus' song written in 1966**
- **At the peak of the “God is Dead” movement in the USA.**

Origins:

*Is It Reasonable to Believe in God in
this Scientific Age?*



April 8, 1966

Origins:

Is It Reasonable to Believe in God in this Scientific Age?



April 8, 1966

- Thomas J.J. Altizer & William Hamilton
- *Radical Theology and the Death of God*
- “We must realize that the death of God is an historical event, that God has died in our cosmos, in our history...”

Origins:

Is It Reasonable to Believe in God in this Scientific Age?



April 8, 1966

- Thomas J.J. Altizer & William Hamilton
- *Radical Theology and the Death of God*
- "...the dead God is ... the God of the historic Christian Church, and beyond the Church, of Christendom at large."

Origins:

Is It Reasonable to Believe in God in this Scientific Age?

■ Other brazen things said:

- “It is absolutely safe to say that if you meet somebody who claims not to believe in evolution, that person is ignorant, stupid or insane (or wicked, but I’d rather not consider that).”

(Richard Dawkins, New York Times, 2007)

Origins:

Is It Reasonable to Believe in God in this Scientific Age?

■ In contrast:

- “It now seems to me that the findings of more than fifty years of DNA research have provided materials for a new and enormously powerful argument to design.”

**Anthony Flew, Professor of Philosophy
Former atheist, author and debater, 2004**

Origins:

*Is It Reasonable To Believe in God in
this Scientific Age?*

- **Ps. 19:1-4** – The heavens declare
His glory
- **Rom. 1:20** – Argument from
design

Origins:

Is It Reasonable To Believe in God in this Scientific Age?


- **Rom. 1:20** - His invisible attributes ... understood by the things that are made
 - His Eternal Power
 - His Divine Nature (Godhead)

Signs of Intelligent Life in the Universe?

- **The search for extra-terrestrial intelligence (SETI) was supported by your tax dollars for 25 years.**
- **The program continues to this day with private funding.**
- **What kind of evidence would convince you that there are ET's?**

Search for Extra Terrestrial Intelligence - SETI

The screenshot shows the SETI Institute website. At the top left is the SETI INSTITUTE logo. To its right is a search bar with the word 'search' in a button. Below the logo is a navigation menu with the following items: Home, News, About us, Center for SETI Research, Carl Sagan Center for the Study of Life in the Universe, Education & Public Outreach, Publications, Support us, and TeamSETI Login. On the left side, there is a sidebar with a 'SETI' header and a list of links: Allen Telescope Array, Optical SETI, Interstellar Message Construction, Project Phoenix (past search), Background Science, History of SETI, Center for SETI Research Team, and Other people doing SETI. The main content area features a section titled 'The Center for SETI Research' with a dotted line separator. Below the title is a paragraph of text: 'SETI, the Search for Extraterrestrial Intelligence, is an exploratory science that seeks evidence of life in the universe by looking for some signature of its technology. Our current understanding of life's origin on Earth suggests that, given a suitable environment and sufficient time, life will develop on other planets. Whether even simple life will give rise to intelligent, technological life is open to speculation. However, if such a civilization could be detected across interstellar distances, it may actually offer our best hope of discovering extraterrestrial life in the universe. The search for advanced technological civilizations is a significant effort. Currently the Center for SETI Research develops signal processing software that uses it to search for signals from advanced technological civilizations in the universe.'



SETI, the Search for Extraterrestrial Intelligence, is an exploratory science that seeks evidence of life in the universe by looking for some signature of its technology...

From www.seti.org

“Virtually all radio SETI experiments have looked for what are called "narrow-band signals." These are radio emissions that are at one spot on the radio dial... Narrow-band signals... are the mark of a purposely built transmitter. Natural cosmic noisemakers, such as pulsars, quasars... do not make radio signals that are this narrow.”

From www.seti.org

“Virtually all radio SETI experiments have looked for what are called "narrow-band signals." These are radio emissions that are at one spot on the radio dial... Narrow-band signals... **are the mark of a purposely built transmitter.** Natural cosmic noisemakers, such as pulsars, quasars... do not make radio signals that are this narrow.”

They can infer intelligent cause without identifying what that intelligence is.

Where Did We Come From?

Only two possibilities

Core Ideas

**Proponents of the
General Theory of Evolution
(Natural Causes)**

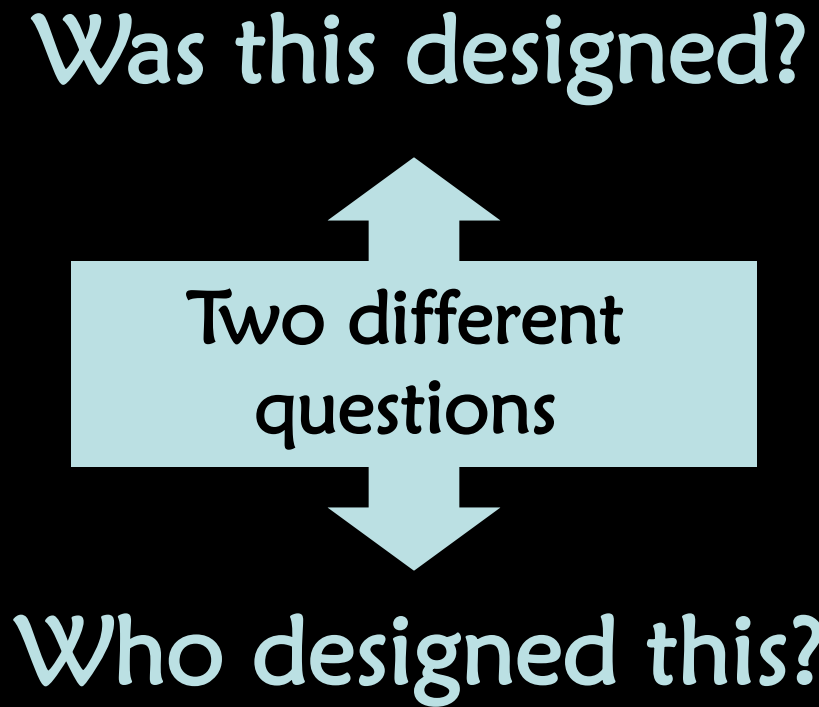
**Proponents of Design
(Intelligent Design)**

- Life, in all its forms, emerged from simple substances by natural means.
- Life, in all its forms, is the result of intelligent shaping of matter.

What is Intelligent Design (ID)?

A theory for how we may properly conclude something is designed by an intelligent source.

Was this designed?



Two different questions

Who designed this?

Two basic inferences with regard to the origin of life and its diversity

- **Both inferences are ultimately positions of faith because**
 - **Origins are not amenable to normal repeatable experimentation or direct observation**
 - **We must use present circumstances to draw inferences about the remote past**

The Need for Honesty with Ourselves

- We all approach the subject with certain presuppositions
- We tend to see what we expect

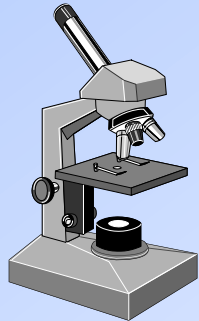
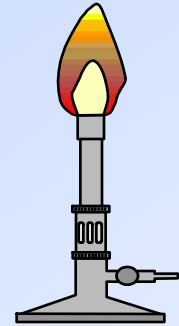


The Need for Honesty with Ourselves

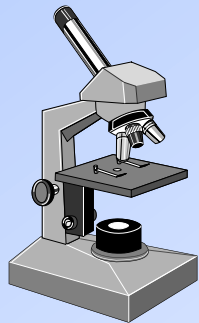
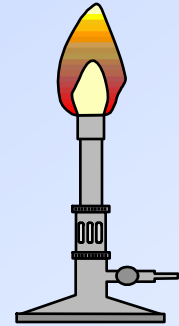
- We all approach the subject with certain presuppositions
- We tend to see what we expect
- **Very emotional topic**



We will be looking only at evidence in the natural world



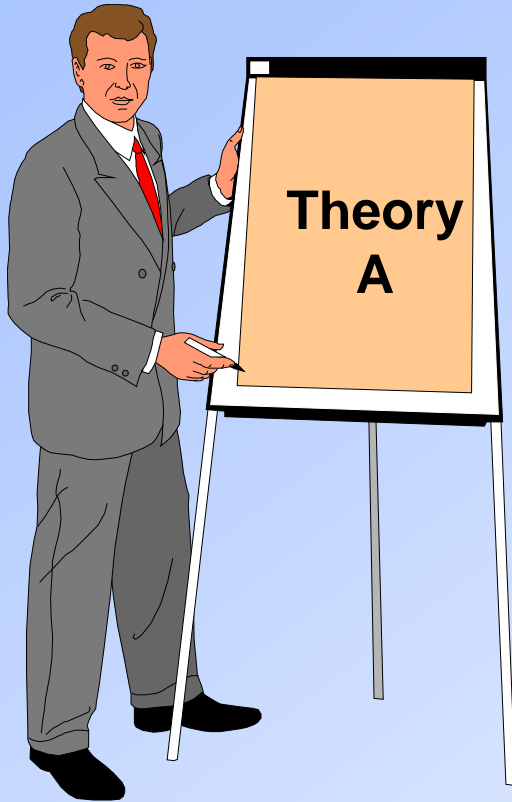
Evidence in the natural world can be used to judge the relative merits of these views



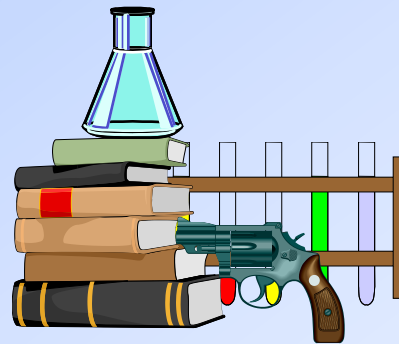
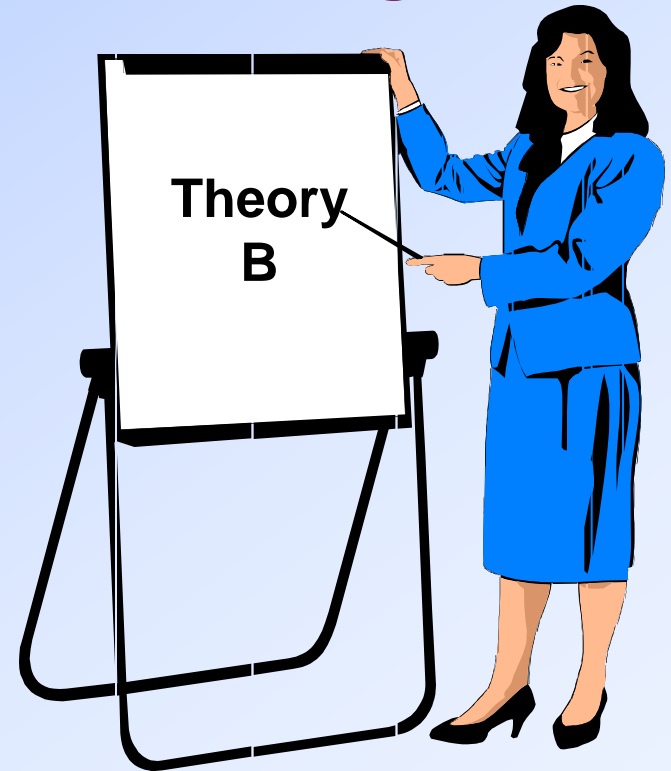
Judge



Evolution

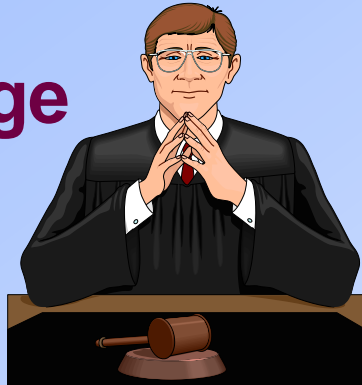


Intelligent Design

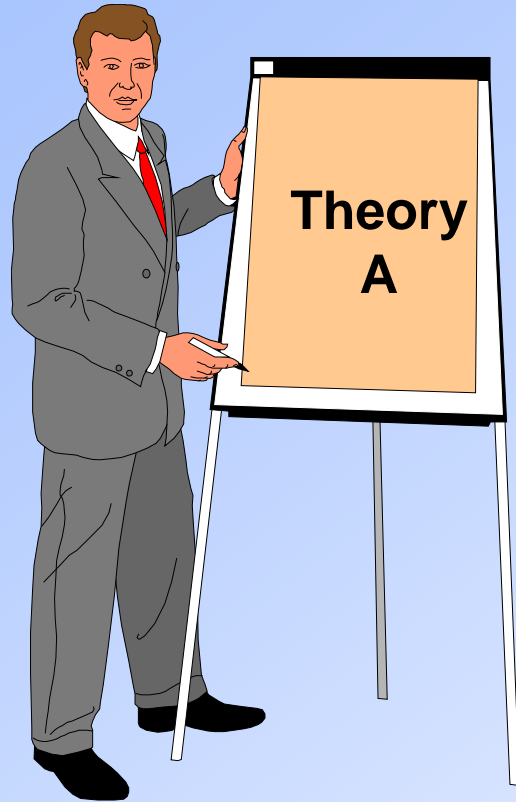


EVIDENCE
Facts of nature

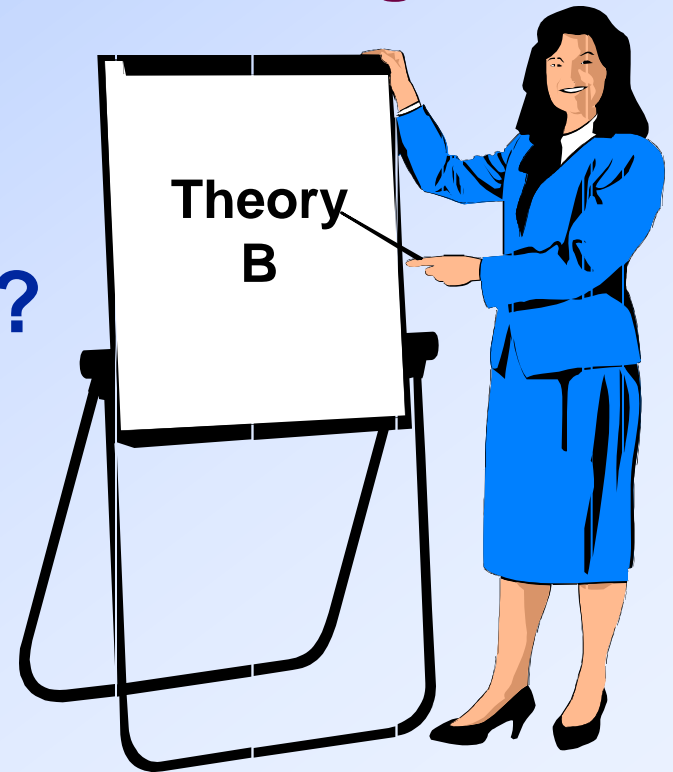
Judge



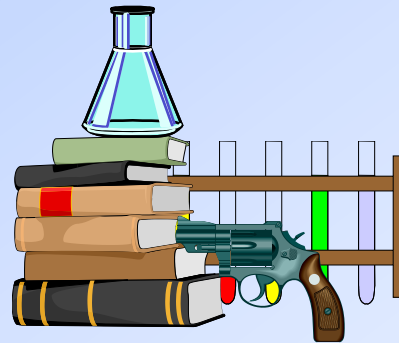
Evolution



Intelligent Design



**Which is
more
reasonable?**

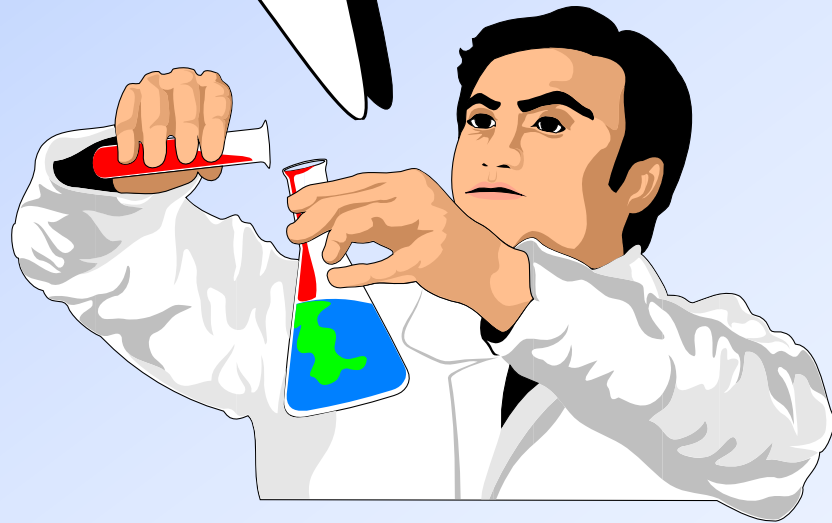


EVIDENCE
Facts of nature

Objection

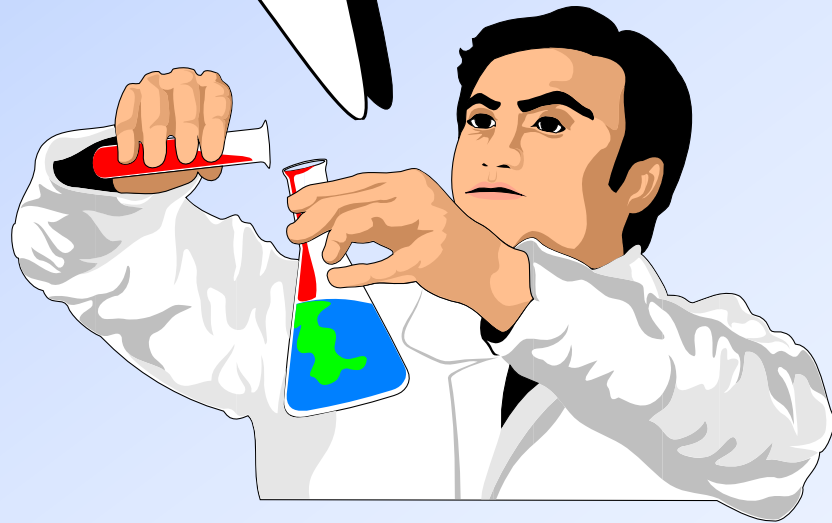
If you bring in intelligent design, you've left the field of science.

On the contrary, many fields in science require inferences of intelligent design regularly



Objection

If you bring in intelligent design, you've left the field of science.



Anthropology
Archeology
Cryptography
Criminal Forensics
Astro-biologists

An example from every day experience:

A photograph of a cloudy sky. The clouds are white and fluffy, set against a blue background. At the top of the image, there is a white horizontal banner with blue text. At the bottom of the image, there is blue text with a white outline.

**Have you ever seen
a face in a cloud?**

An example from every day experience:



Eye

**Have you ever seen
a face in a cloud?**



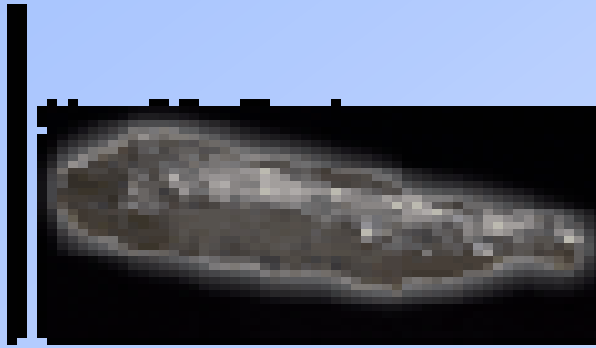
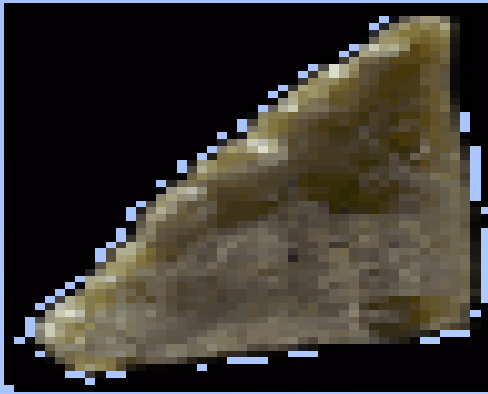
JESUS SAVES

**What if you saw this
in the clouds?**

**Intelligent
Design?**

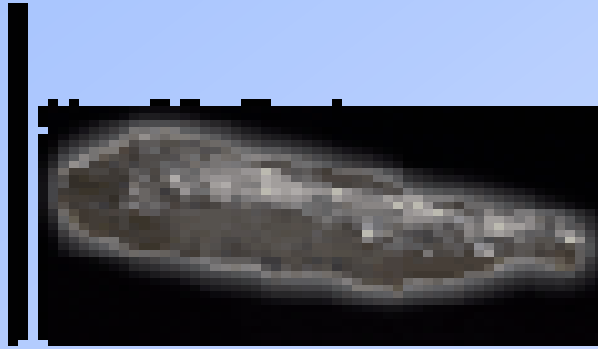
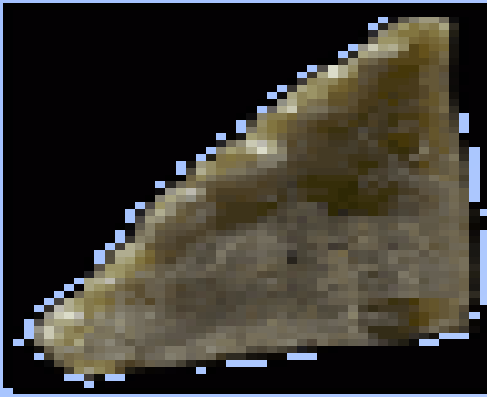


**Natural
Phenomenon?**



By Natural Means?

- **Make careful observations of its features**
- **Run various chemical and physical experiments**

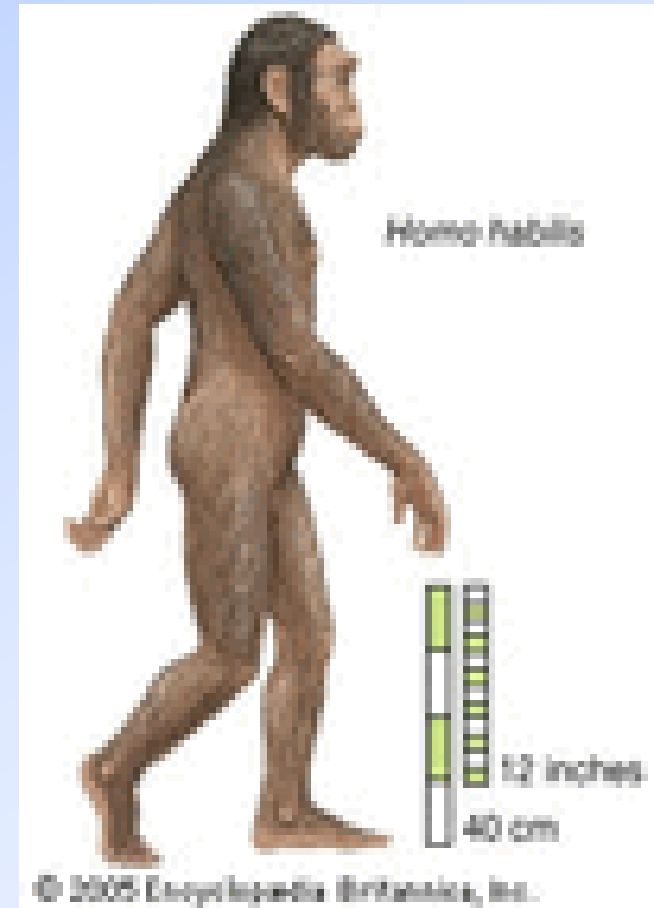


Scraper

By Natural Means?

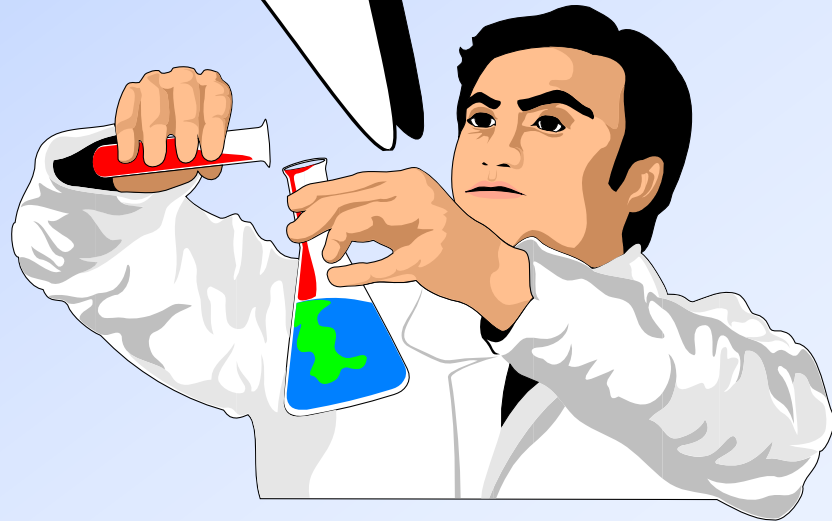
- Make careful observations of its features
- Run various chemical and physical experiments

By Intelligence?



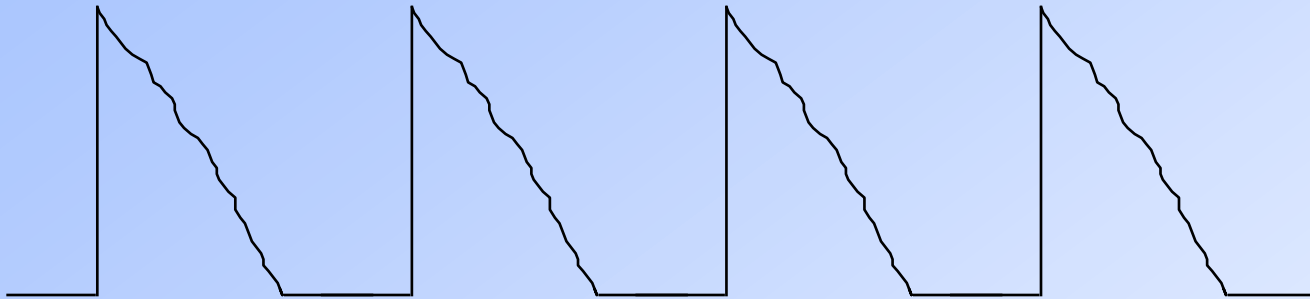
Objection

An archaeologist who finds this is talking about human intelligence, and that's still a part of nature.



SETI

Search for Extra - Terrestrial Intelligence



Signal Received from Space

Intelligent Life in the Universe

I.S. Shklovskii & Carl Sagan

1968

From the Academy Award-Winning Director of "Forrest Gump" and Pulitzer Prize-Winning Author of "Contact."

JODIE FOSTER MATTHEW McCONAUGHEY

A message from deep space.
Who will be the first to go?
A journey to the heart of the universe.

CONTACT

WARNER BROS. PRESENTS

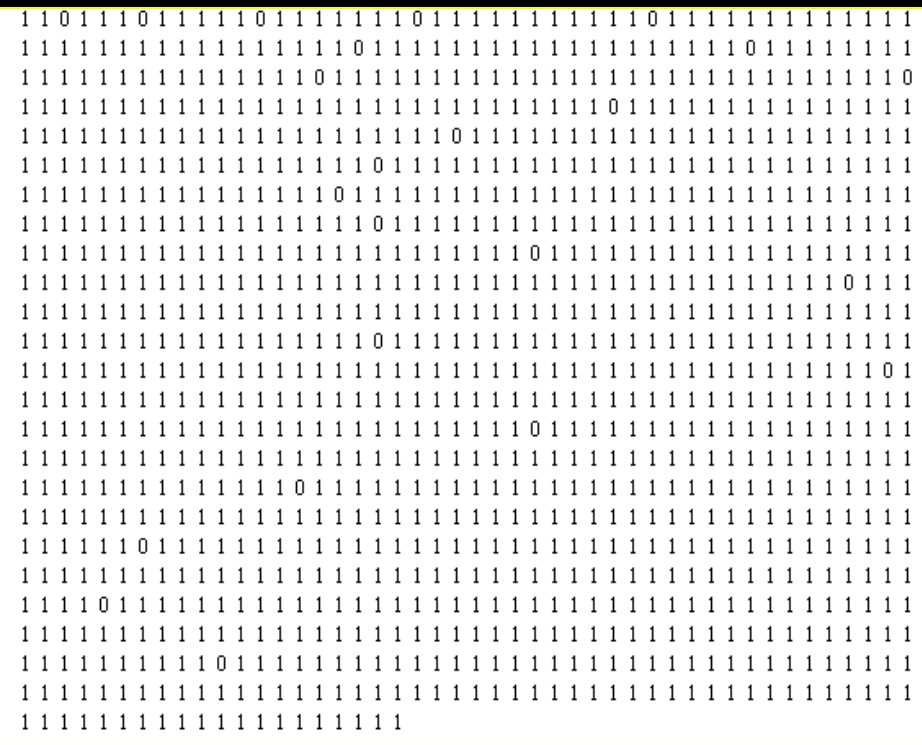
SOUTH SIDE AMUSEMENT COMPANY... ROBERT ZEMECKIS... JODIE FOSTER... MATTHEW McCONAUGHEY... "CONTACT"

JAMES WOODS... JOHN HURT... TOM SKERRITT... ANGELA BASSETT... ALAN SIDESTRI... ARTHUR SCHMIDT... EDWARD VERBENTZ

...DON BURGESS... CARL SAGAN... ANN DRUYAN... IAN BRUSHAW... LINDA ORST... CARL SAGAN... ANN DRUYAN... CARL SAGAN

...JAMES V. HART... MICHAEL GOLDENBERG... ROBERT ZEMECKIS... STEVE STARKER... ROBERT ZEMECKIS

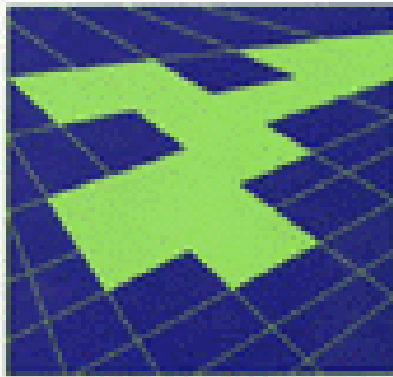
PG-13 PARENTS STRONGLY CAUTIONED
SOME MATERIAL MAY BE INAPPROPRIATE FOR CHILDREN UNDER 13



Cambridge Studies in Probability,
Induction, and Decision Theory

THE DESIGN INFERENCE

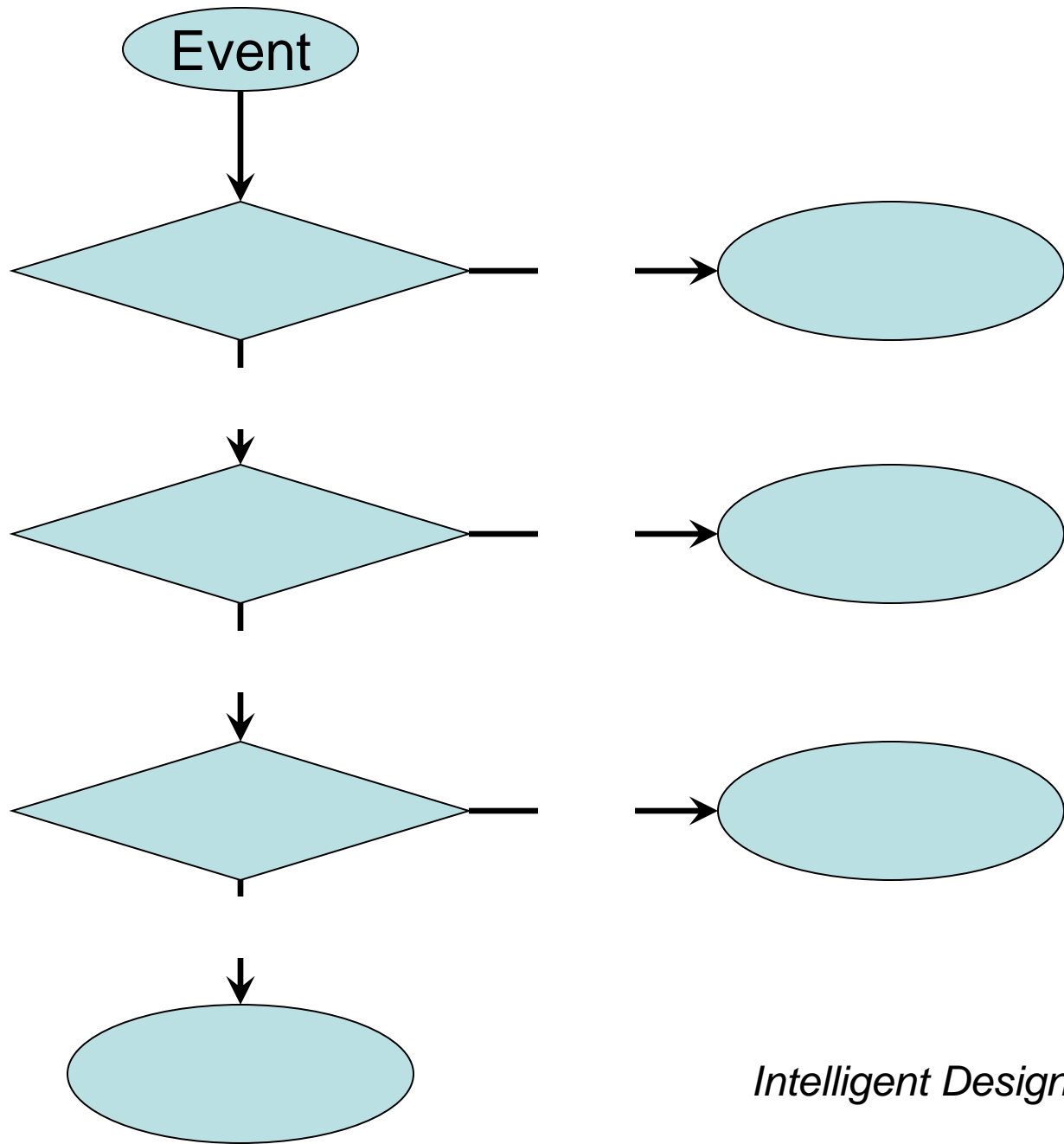
ELIMINATING CHANCE
THROUGH SMALL PROBABILITIES



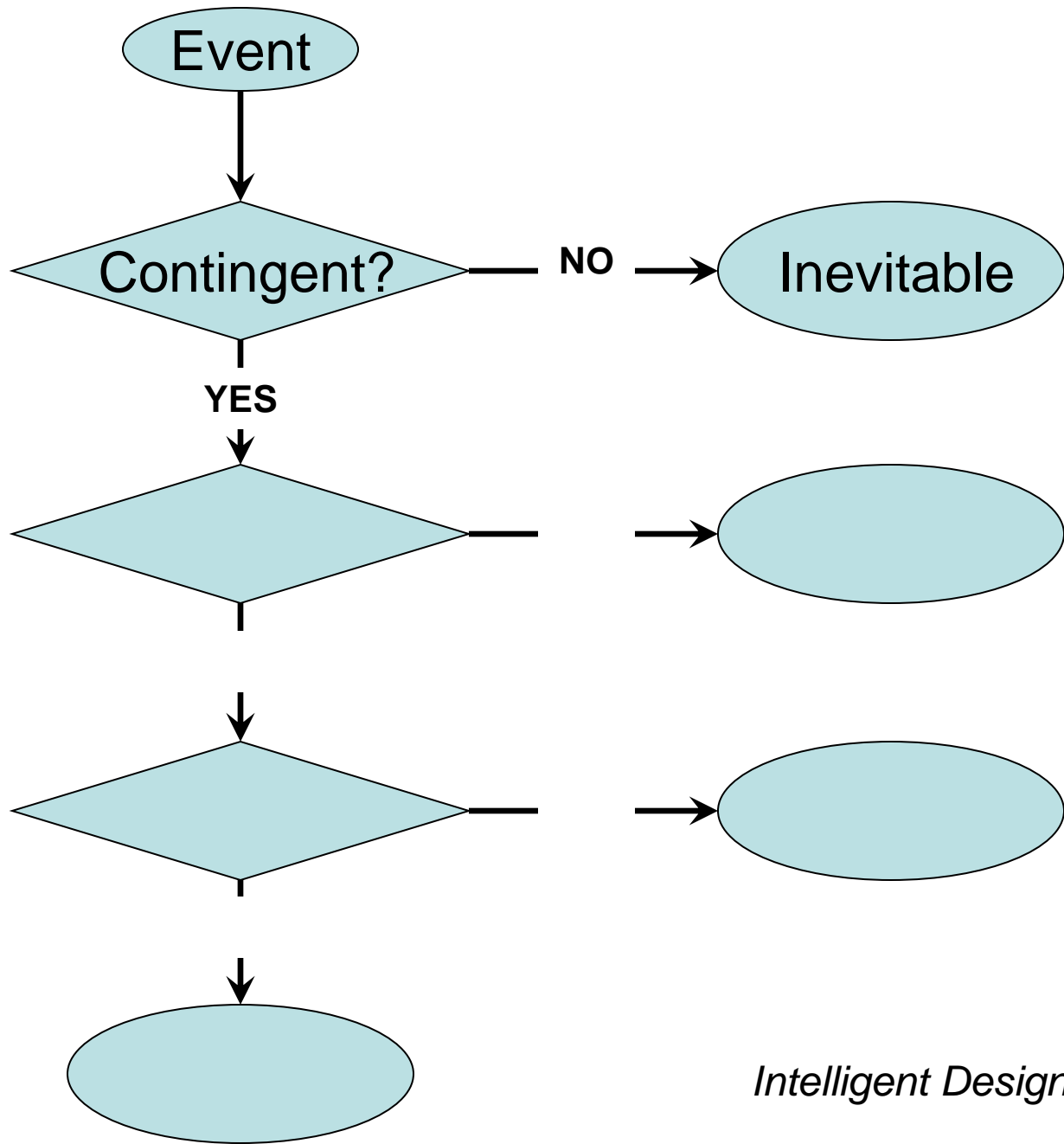
WILLIAM A. DEMBSKI

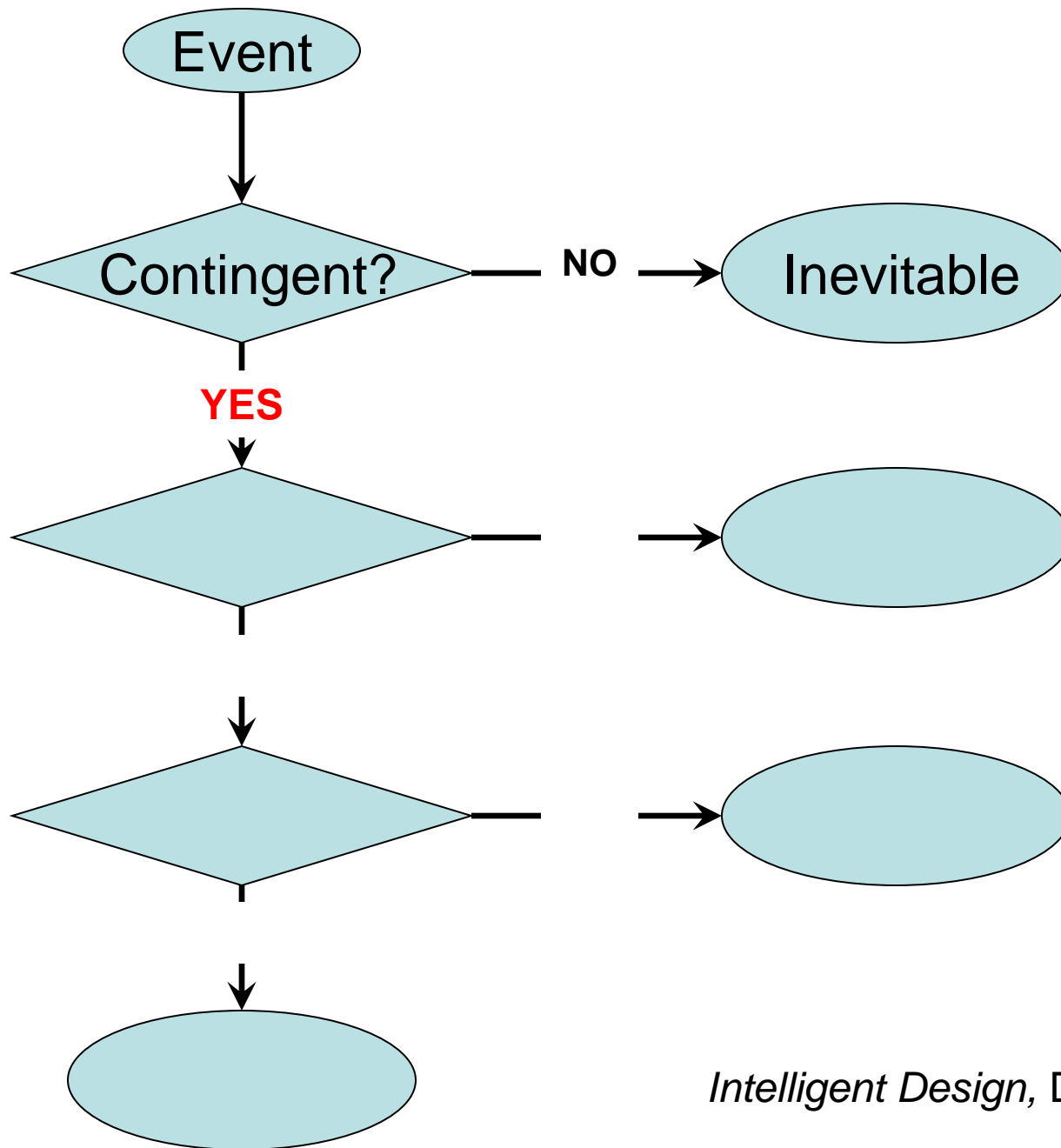
For any event/object,
there are only three
possibilities:

- 1) It had to occur,
inevitable.
- 2) It was an accident,
pure chance.
- 3) It was designed.

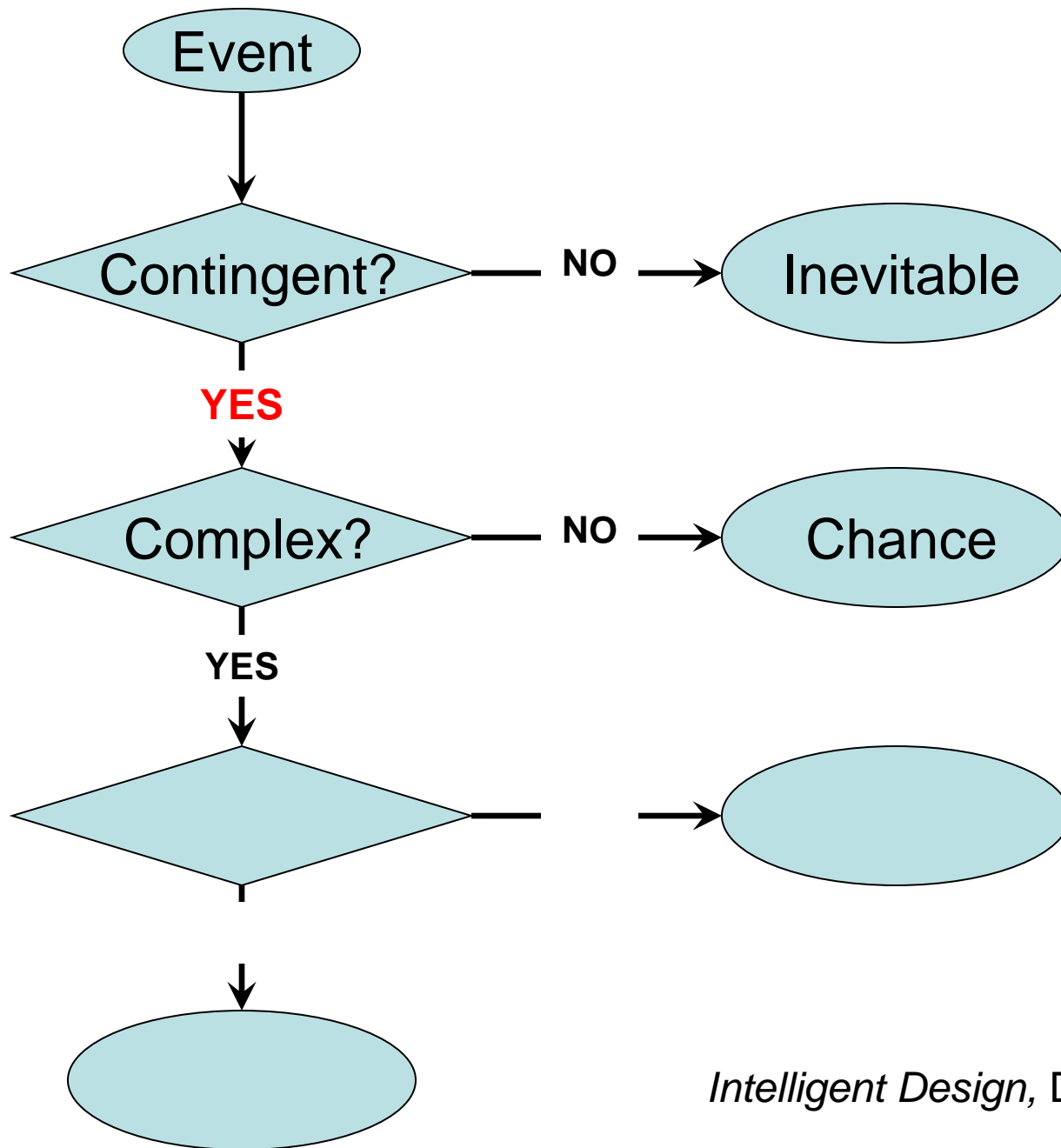


Intelligent Design, Dembski





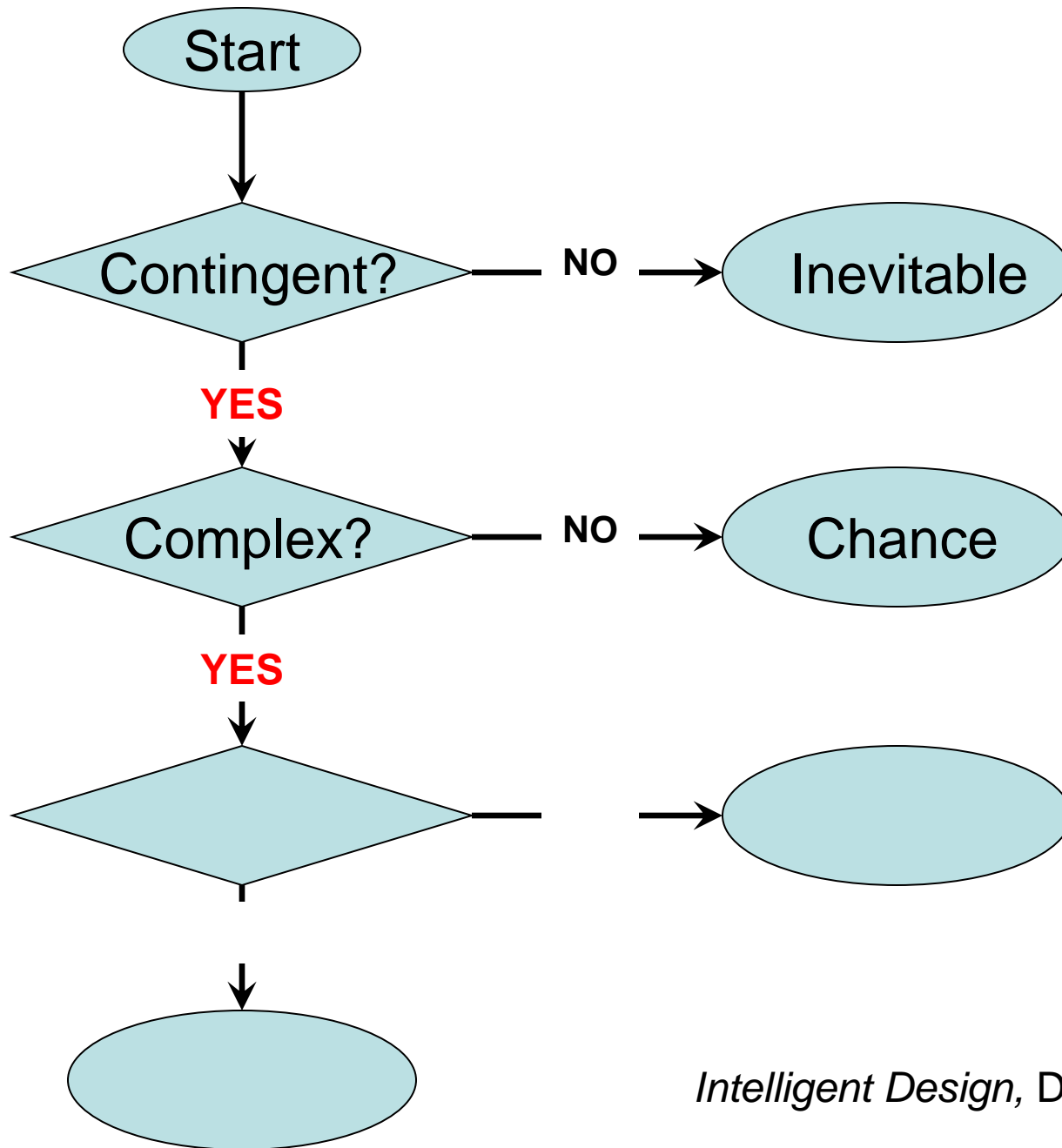
Intelligent Design, Dembski



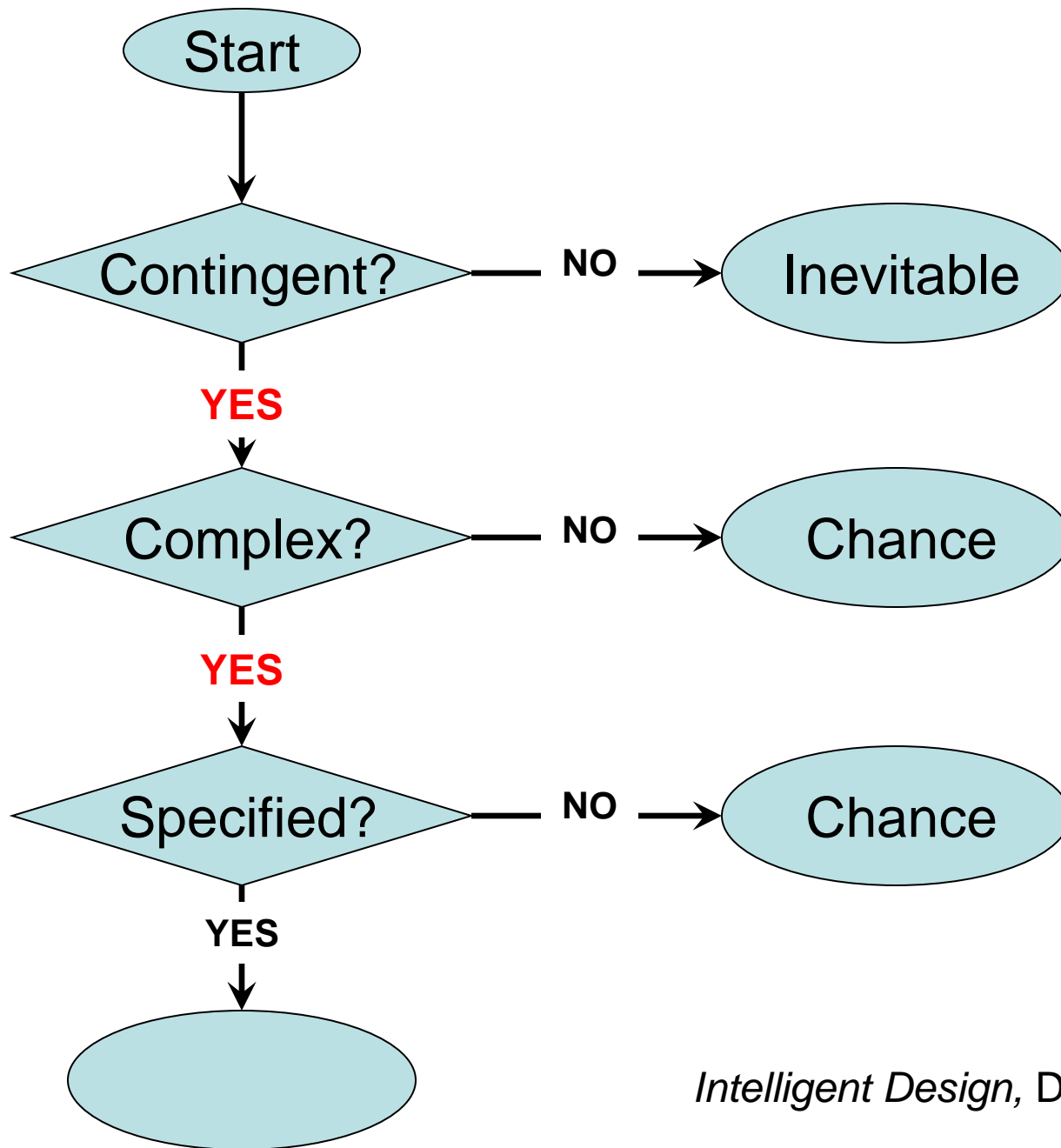
Intelligent Design, Dembski

Complexity

- To establish the **complexity** of this sequence, see the following example:
 - Suppose the signal received was
110111011111
(12 bits; first three prime numbers)
 - While this signal is contingent, it is **too simple** and could reasonably have been generated by random radio emissions.



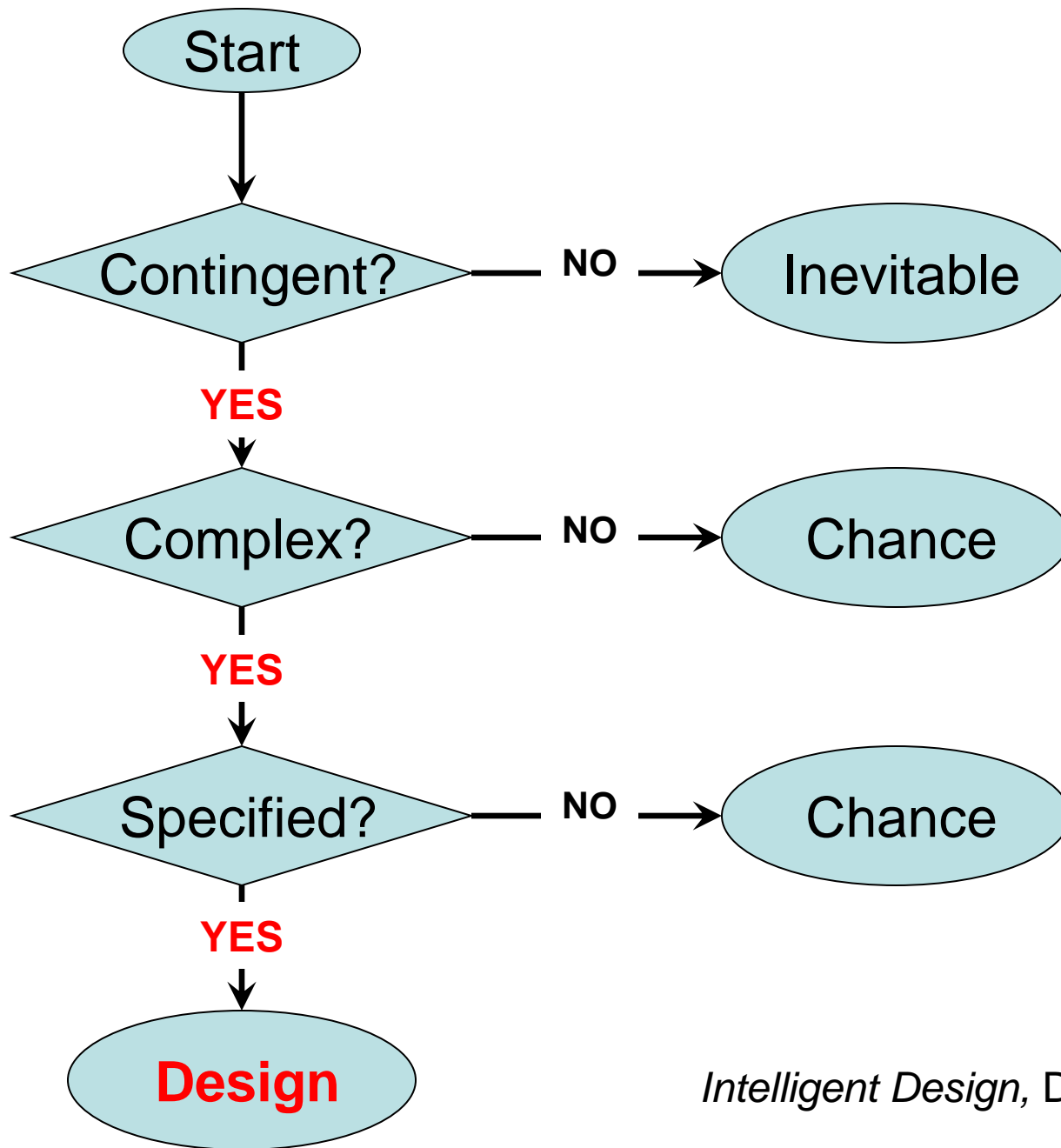
Intelligent Design, Dembski



Intelligent Design, Dembski

Specificity

- To establish the **specificity** of this sequence we must:
 - Show that the pattern in the sequence is **independent** of the event it describes.
 - In other words, **side information** enables us **to construct the pattern** in the sequence without recourse to the actual event.



Intelligent Design, Dembski

From the Academy Award-Winning Director of "Forrest Gump" and Pulitzer Prize-Winning Author of "Contact."

JODIE FOSTER
MATTHEW McCONAUGHEY

A message from deep space.
Who will be the first to go?
A journey to the heart of the universe.

CONTACT

WARNER BROS.

SOUTH SIDE AMUSEMENT COMPANY ... ROBERT ZEMECKIS ... JODIE FOSTER, MATTHEW McCONAUGHEY "CONTACT"
JAMES WOODS, JOHN HURT, TOM SHERKITT, ANGELA BASSETT, ALAN SIDESTRI, ARTHUR SCHMIDT, EDWARD VERBENTZ
DON BURGESS ... CARL SAGAN ... ANN DRUYAN ... DAN BRUSHAW, LINDA URS ... CARL SAGAN, ANN DRUYAN ... CARL SAGAN
JAMES V. HART, MICHAEL GOLDENBERG ... ROBERT ZEMECKIS, STEVE STARKER ... ROBERT ZEMECKIS

Scientists in Sagan's fictional novel Contact concluded the signal received on their radio telescopes was from an intelligent source (was designed).

It was contingent

It was complex

It was specified (in advance)

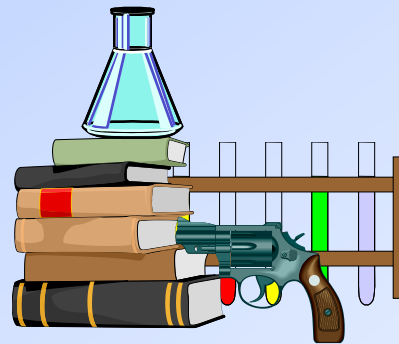
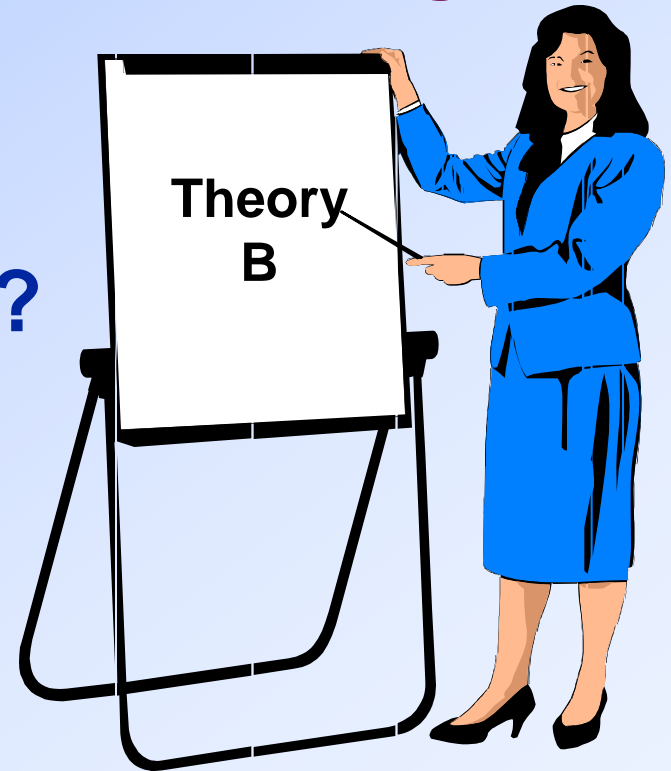
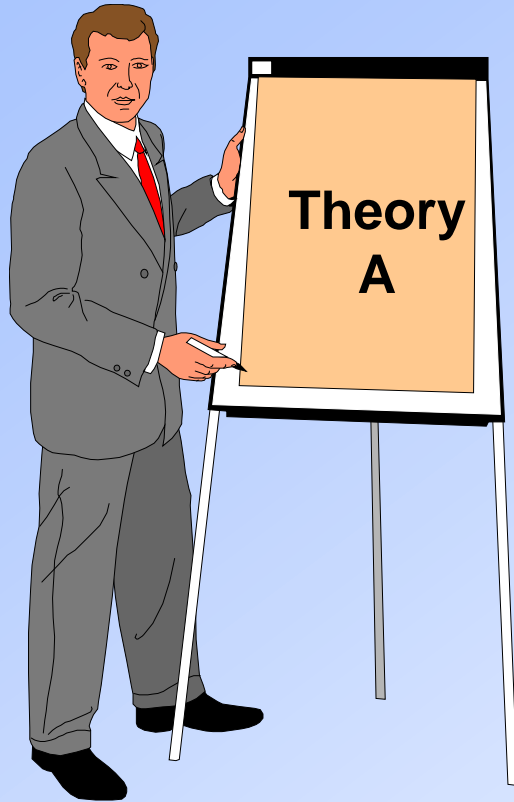
Judge



Natural Causes

Intelligent Design

Which is more reasonable?

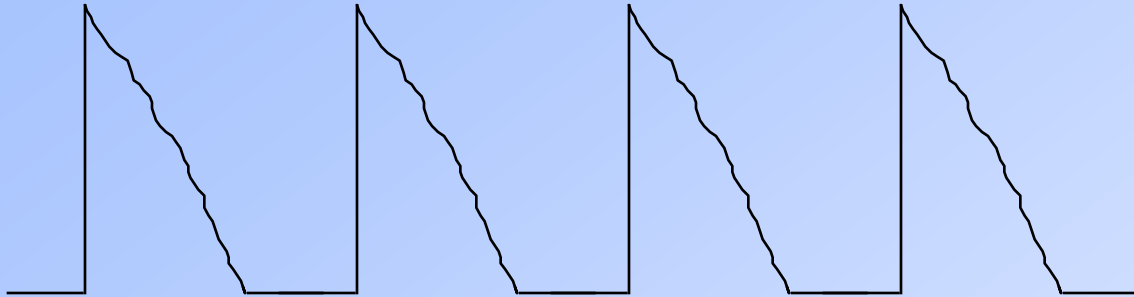


EVIDENCE

Facts of nature

SETI

Search for Extra - Terrestrial Intelligence



Signal Received from Space

**What if we received a message
from space with a language we
could decode and read?**

The Issue IS NOT:

Scientific Fact vs. Religious Faith

The Issue IS NOT:

Scientific Fact vs. Religious Faith

The Issue IS:

**Which position of faith is
more reasonable based on
interpretation of data.**

The Issue IS NOT:

**The evidence (data) obtained from
science**

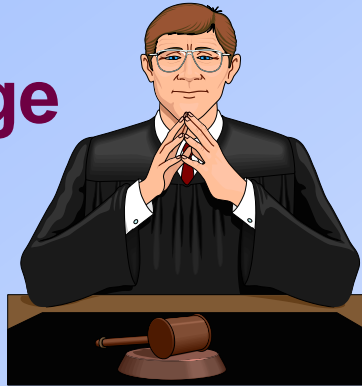
The Issue IS NOT:

**The evidence (data) obtained from
science**

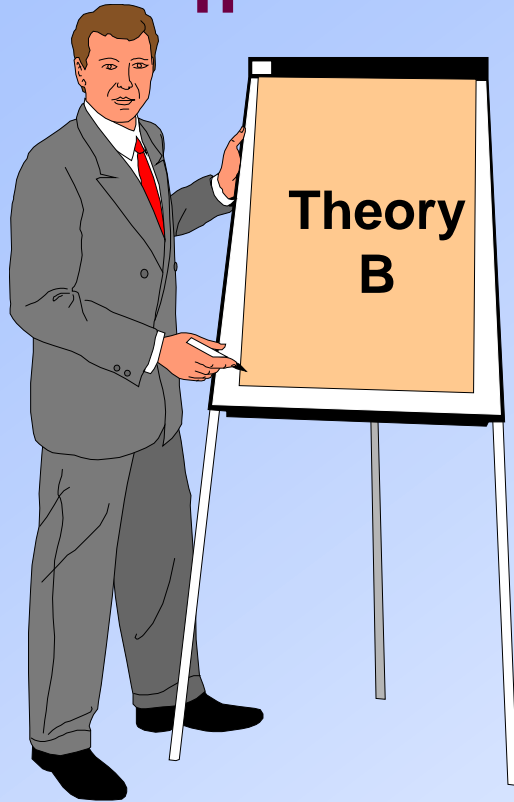
The Issue IS:

Which **interpretation of the
evidence (data) is more
reasonable**

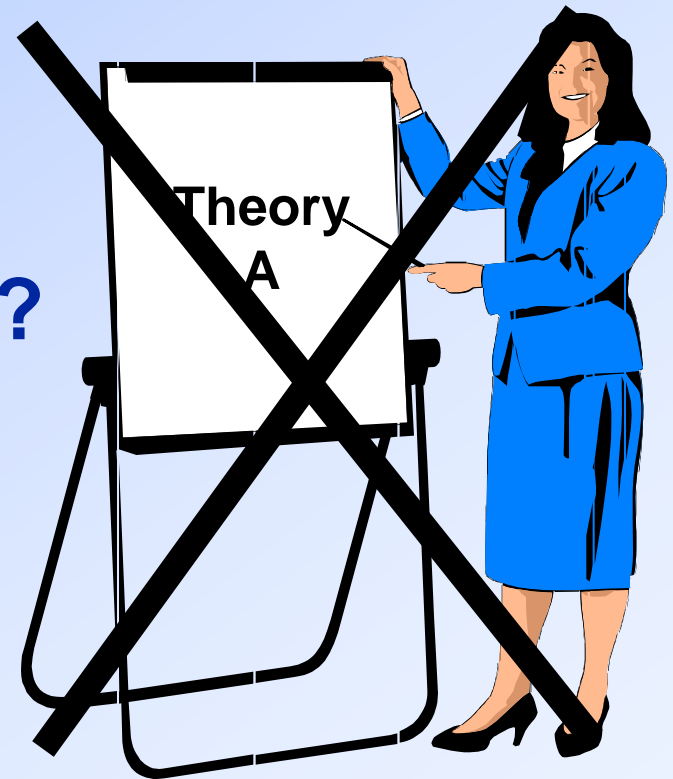
Judge



Evolution



Intelligent Design



Which is more reasonable?



EVIDENCE

Facts of nature

Points to Remember

- We all approach the subject of origins with personal biases.
- It is an emotional subject because it has implications far beyond what science can answer.
- Science permits any cause, **natural or intelligent**, if it is supported by uniform sensory experience.
- The methods of science and the evidence of the natural world can be used to judge the relative merits of the two views on origins - natural causes (evolution) and intelligent design.
- The Design Inference can be analyzed mathematically.
- Any position on origins is ultimately a position of **faith**.